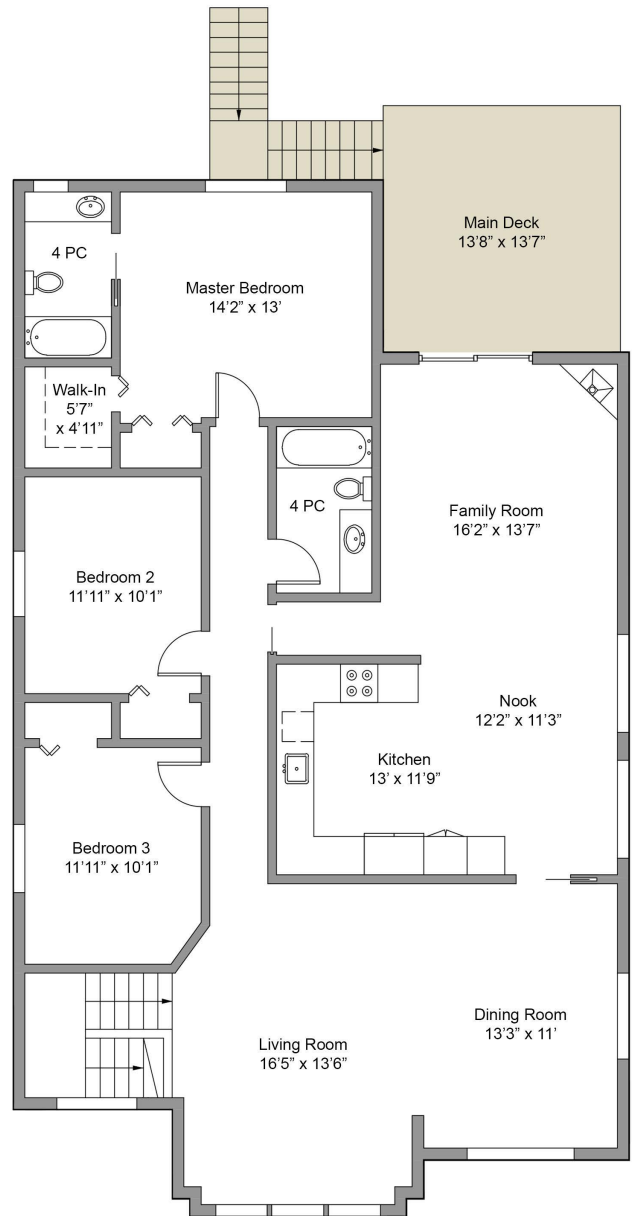
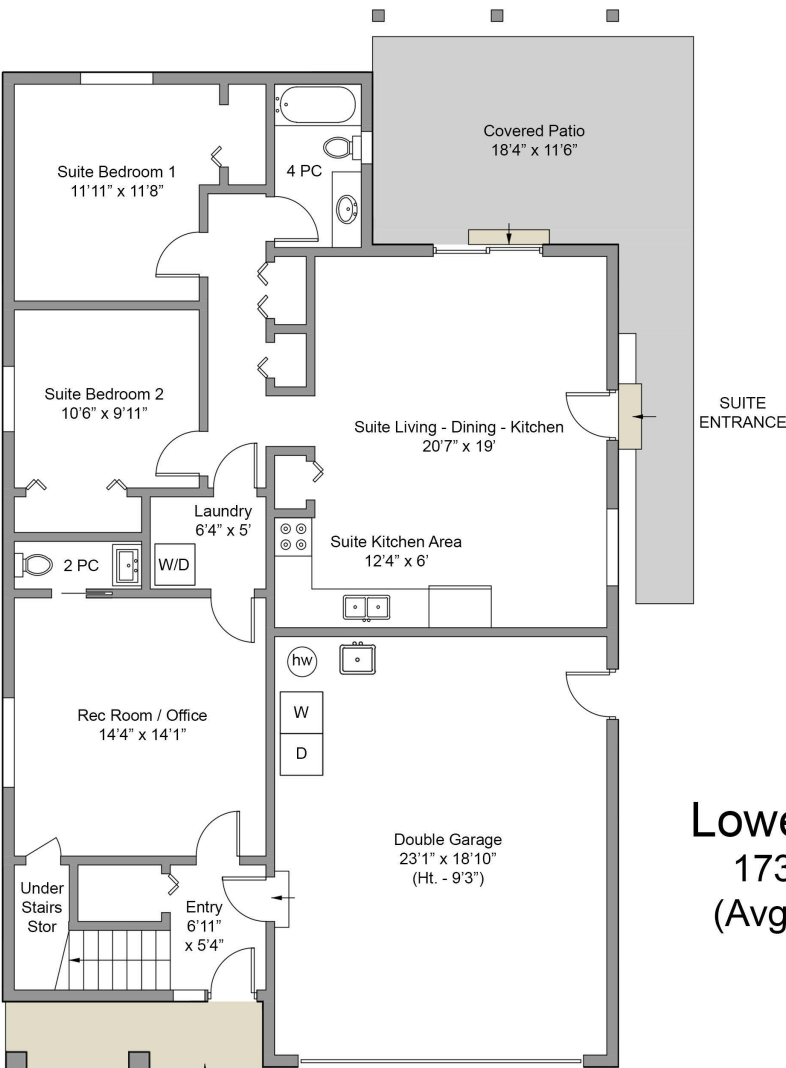
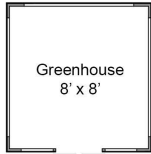


**CHRISTIE'S**  
INTERNATIONAL REAL ESTATE

**Main Floor**  
1776 Sqft.  
(Avg Ht. - 8')



**Lower Floor**  
1733 Sqft.  
(Avg Ht. - 8')



**1264 Layritz Pl.**

*This floor-plan was created for the exclusive use of Matt Eide with Newport Realty. Area and dimensions are approximate, buyer to verify on site.*

| FLOOR                | AREA (Sq. Ft.) |            |        |
|----------------------|----------------|------------|--------|
|                      | Finished       | Unfinished | Garage |
| Main                 | 1776           | 0          |        |
| Lower                | 1267           | 0          | 466    |
| Total                | 3043           | 0          | 466    |
| Green House          | 0              | 67         |        |
| Main Decks / Patios  | 0              | 236        |        |
| Lower Decks / Patios | 0              | 365        |        |